

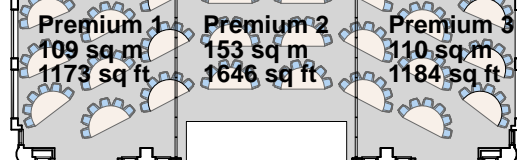
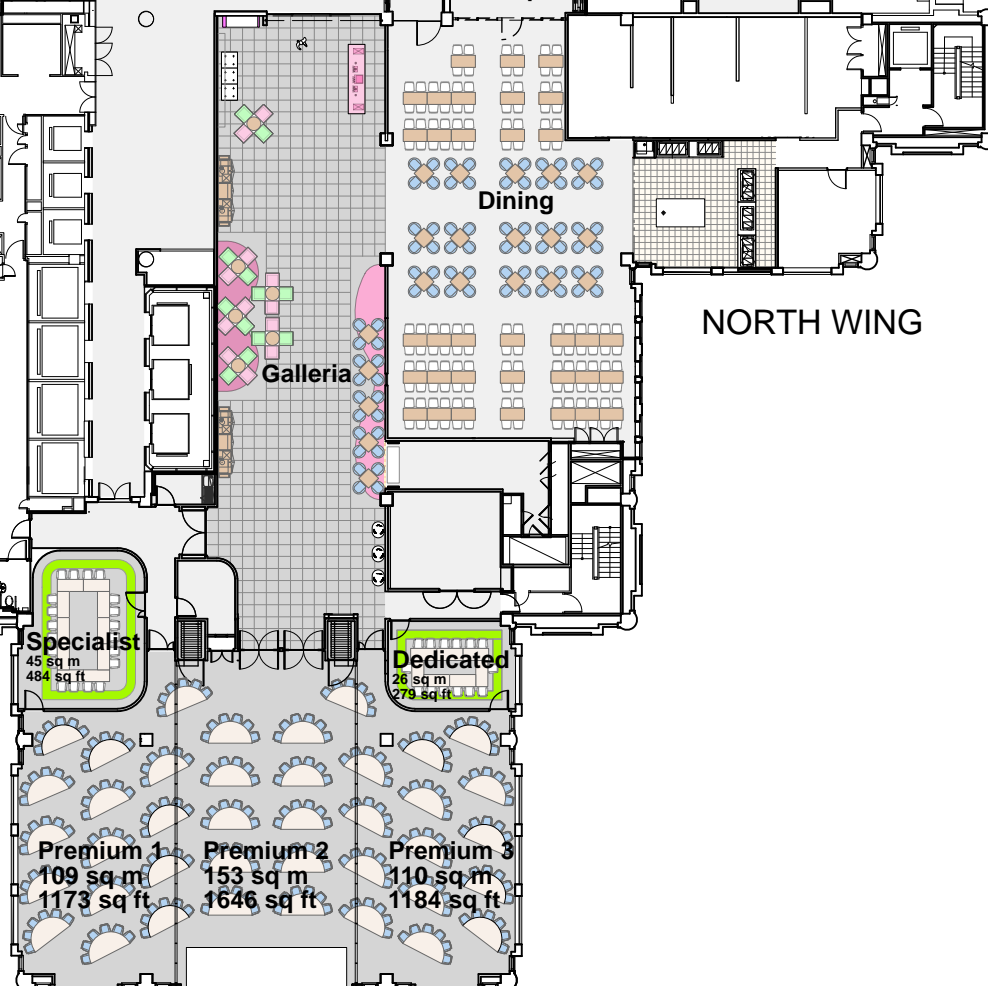
St Paul's - 200 Aldersgate

First floor

SOUTH WING

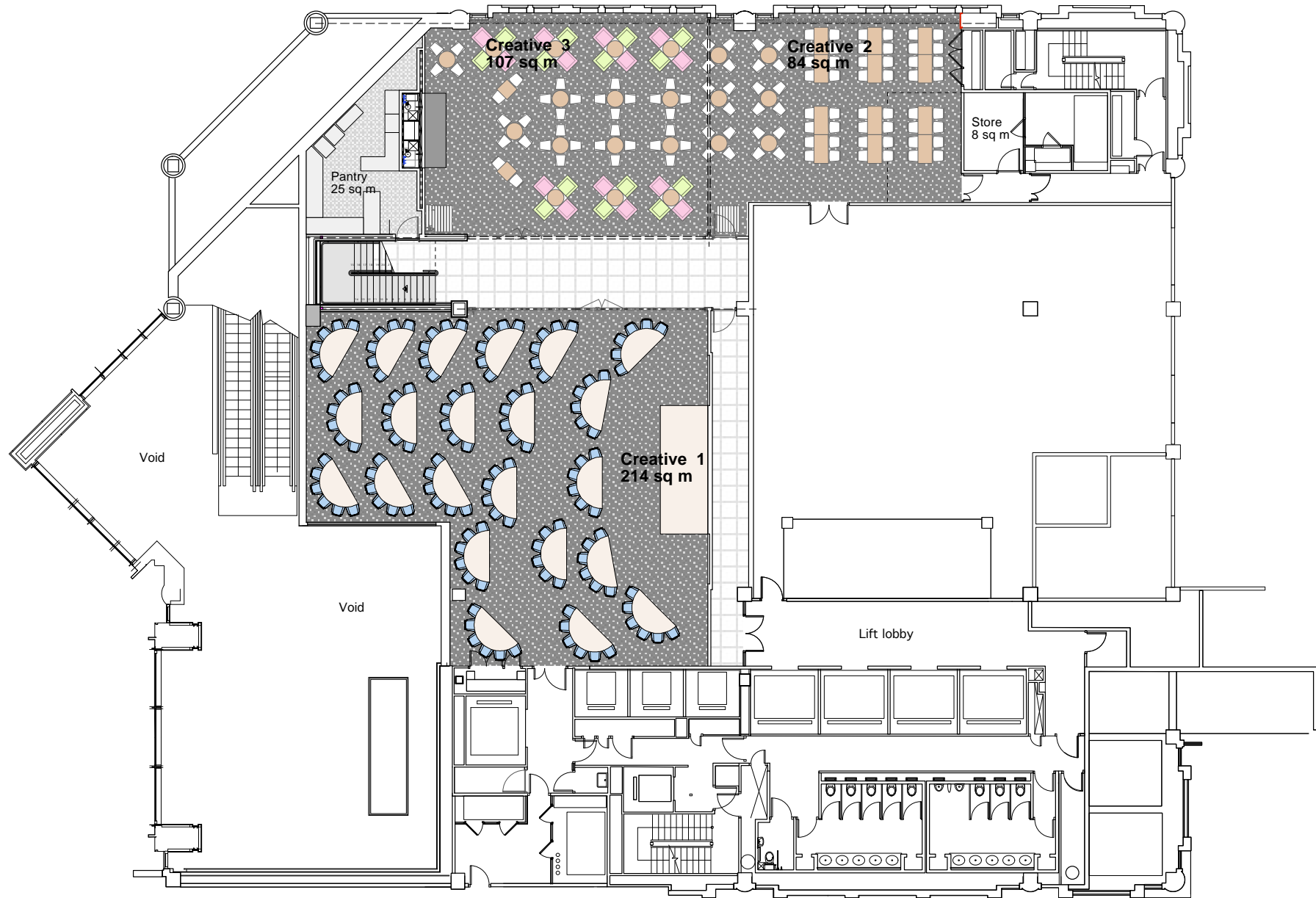


NORTH WING



St Paul's - 200 Aldersgate

Upper ground floor



Capacities

North Wing

Rooms	Dimensions (m)	Theatre	Cabaret	U-shape	Classroom	Boardroom
Premium 1	W7.75m x L12 x H3.6m	108	72	35	68	38
Premium 2	W8.5m x L16m X h3.6m	180	84	38	84	48
Premium 3	W7.75m x L12 x H3.6m	108	72	30	68	38
Premium Suite	W24m x L12m x H3.6m	400	250	N/A	190	N/A
Premium 1&2	W16.25m x L12m x H3.6m	280	156	N/A	150	60
Premium 2&3	W16.25m x L12m x H3.6m	280	156	N/A	150	N/A
Dedicated	W4.5m x L6m x H3.6m	N/A	N/A	N/A	N/A	N/A
Specialist	W8m x L6.3m x H3.6m	42	24	20	16	24

South Wing

Rooms	Dimensions (m)	Theatre	Cabaret	U-shape	Classroom	Boardroom
Impressive 1	W7.5m x L12.5m x H3.6m	85	42	18	36	24
Impressive 2	W7.5m x L12.5 x H3.6m	96	45	26	38	28
Impressive Suite	W14.5m x L12m x H3.6m	186	105	42	96	52
Innovative	W9.5m x L8m x H3.6m	86	42	22	38	28
Dynamic	W5m x L7.5m x H3.6m	40	14	12	14	N/A
Touch Base	W6.2m x L4m x H3.6m	N/A	N/A	N/A	N/A	12

Upper Ground

Rooms	Dimensions (m)	Theatre	Cabaret	U-shape	Classroom	Boardroom
Creative 1	W16.8 x L14.9 x H2.7	250	150	40	150	40
Creative 2	W10.6 x L9.3 x H2.7	75	36	20	36	30
Creative 3	W11.8 x L9.3 x H2.7	100	70	28	70	32
Creative 2&3	W22.4 x L18.6 x H2.7	175	98	45	98	55

200 Aldersgate

St Paul's

London

EC1A 4HD

Tel: 020 3735 7700

Fax: 020 7989 0831

Email: stpauls@etcvenues.co.uk

Web: etcvenues.co.uk/venues/stpauls