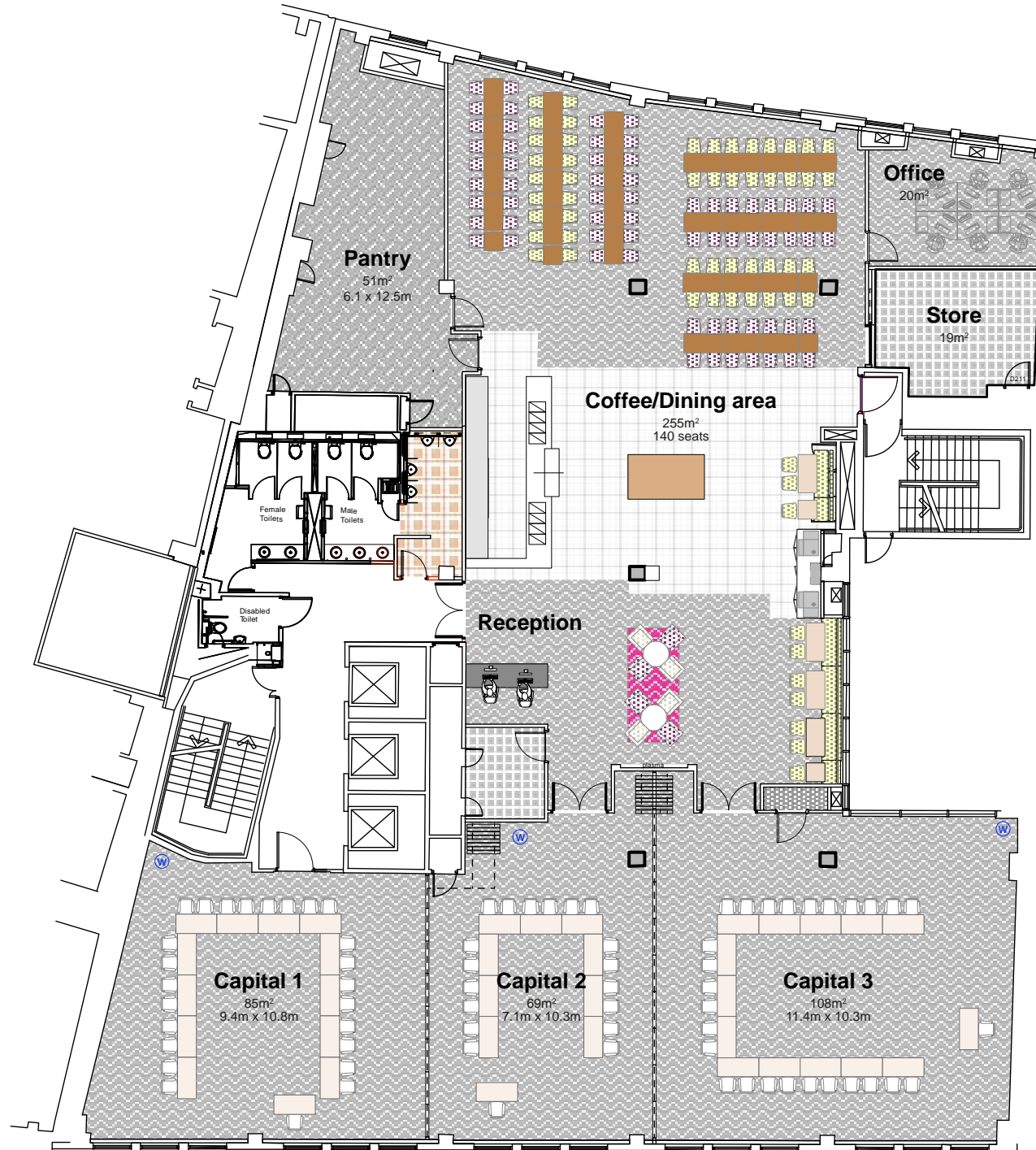


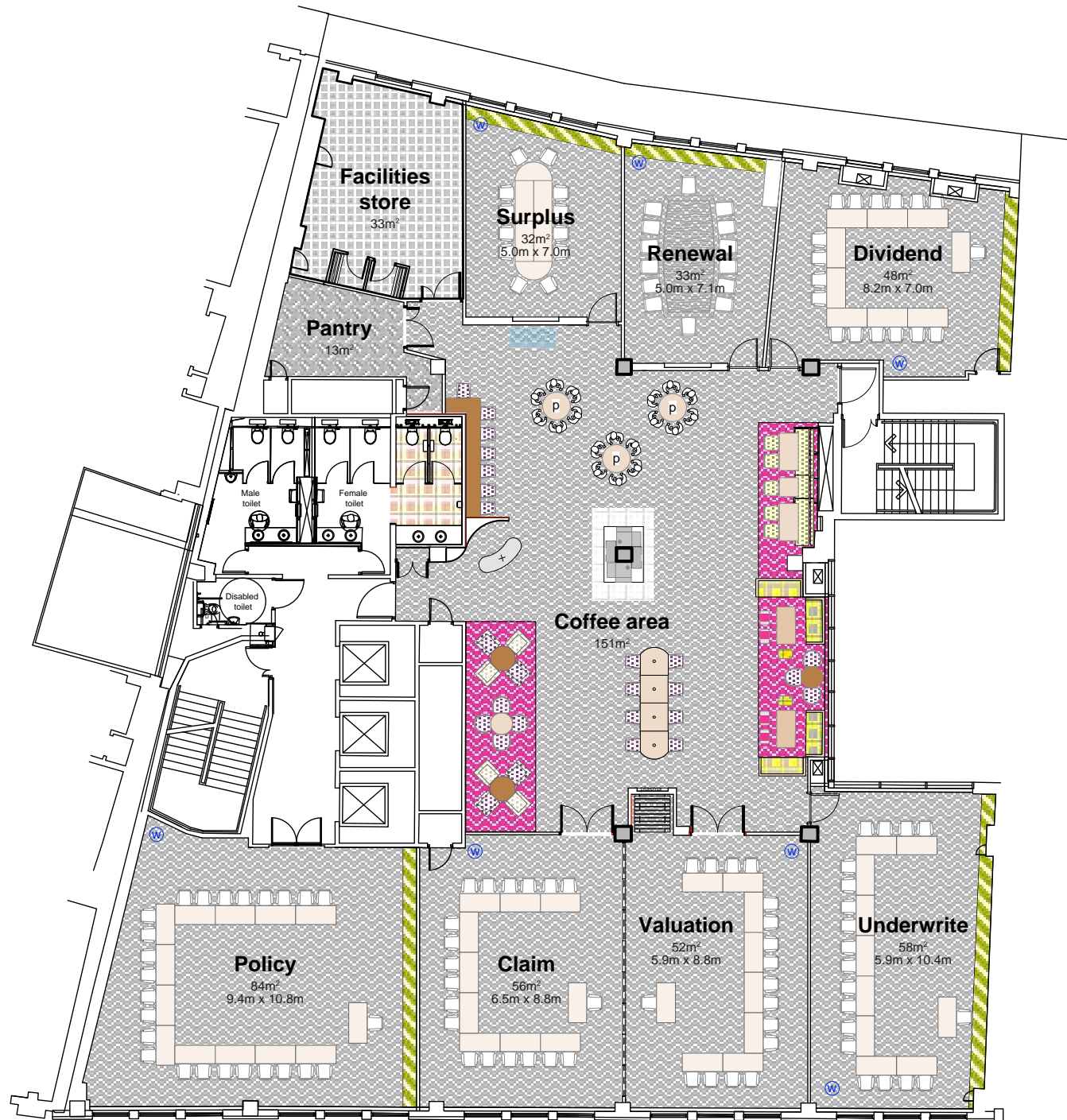
# Monument - No.8 Eastcheap, London

Second Floor



# Monument - No.8 Eastcheap, London

Third Floor



# Capacities

## Second Floor

Rooms	Dimensions (m)	Theatre	Cabaret	U-shape	Classroom	Boardroom
Capital Suite	L27m x W10.3m x H2.6m	240	150	N/A	160	N/A
Capital 1 & 2	L16.5m x W10.3m x H2.6m	140	84	N/A	90	N/A
Capital 2 & 3	L18.5m x W10.3m x H2.6m	160	102	N/A	108	N/A
Capital 1	L9.4m x W8.8m x H2.6m	70	36	N/A	50	N/A
Capital 2	L7.3m x W10.3m x H2.6m	50	36	N/A	32	N/A
Capital 3	L11.4m x W10.3m x H2.6m	106	66	N/A	68	N/A

## Third Floor

Rooms	Dimensions (m)	Theatre	Cabaret	U-shape	Classroom	Boardroom
Policy	L8.8m x W9.4m x H2.6m	70	50	26	52	36
Claim Suite	L8.8m x W12.4m x H2.6m	100	60	30	60	40
Claim	L8.8m x W6.5m x H2.6m	60	30	22	32	24
Valuation	L8.8m x W5.9m x H2.6m	50	30	22	32	24
Underwrite	L10.4m x W5.9m x H2.6m	50	30	20	32	28
Surplus	L7m x W5m x H2.6m	20	10	12	12	12
Renewal	L7.1m x W5m x H2.6m	10	N/A	N/A	N/A	10
Dividend	L8.2m x W7m x H2.6m	45	24	18	25	24

# 8 Eastcheap

8 Eastcheap

London

EC3M 1AE

Tel: 020 7014 3400

Fax: 020 7014 3401

Email: [monument@etcvenues.co.uk](mailto:monument@etcvenues.co.uk)

Web: [etcvenues.co.uk/venues/monument](http://etcvenues.co.uk/venues/monument)