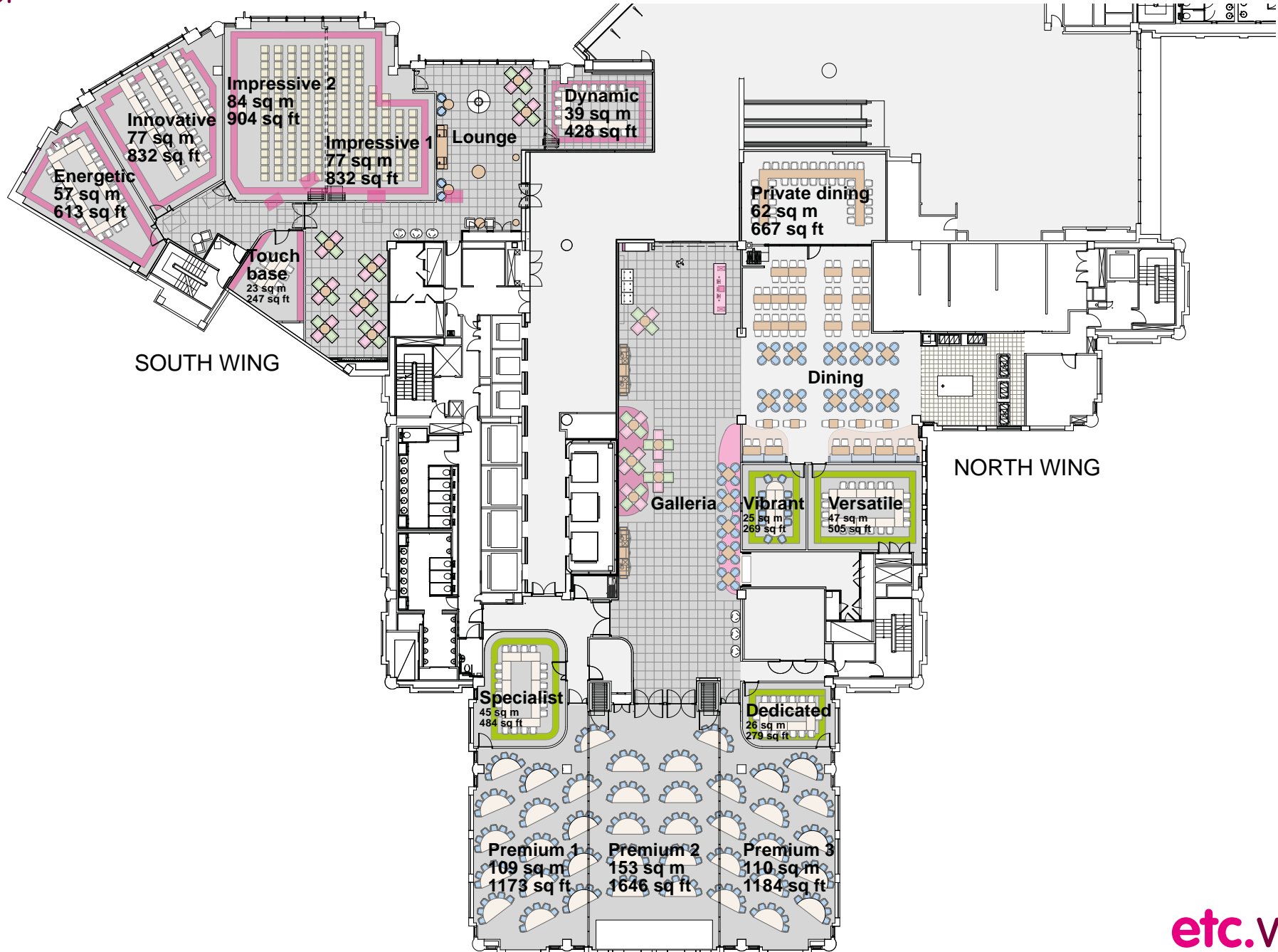


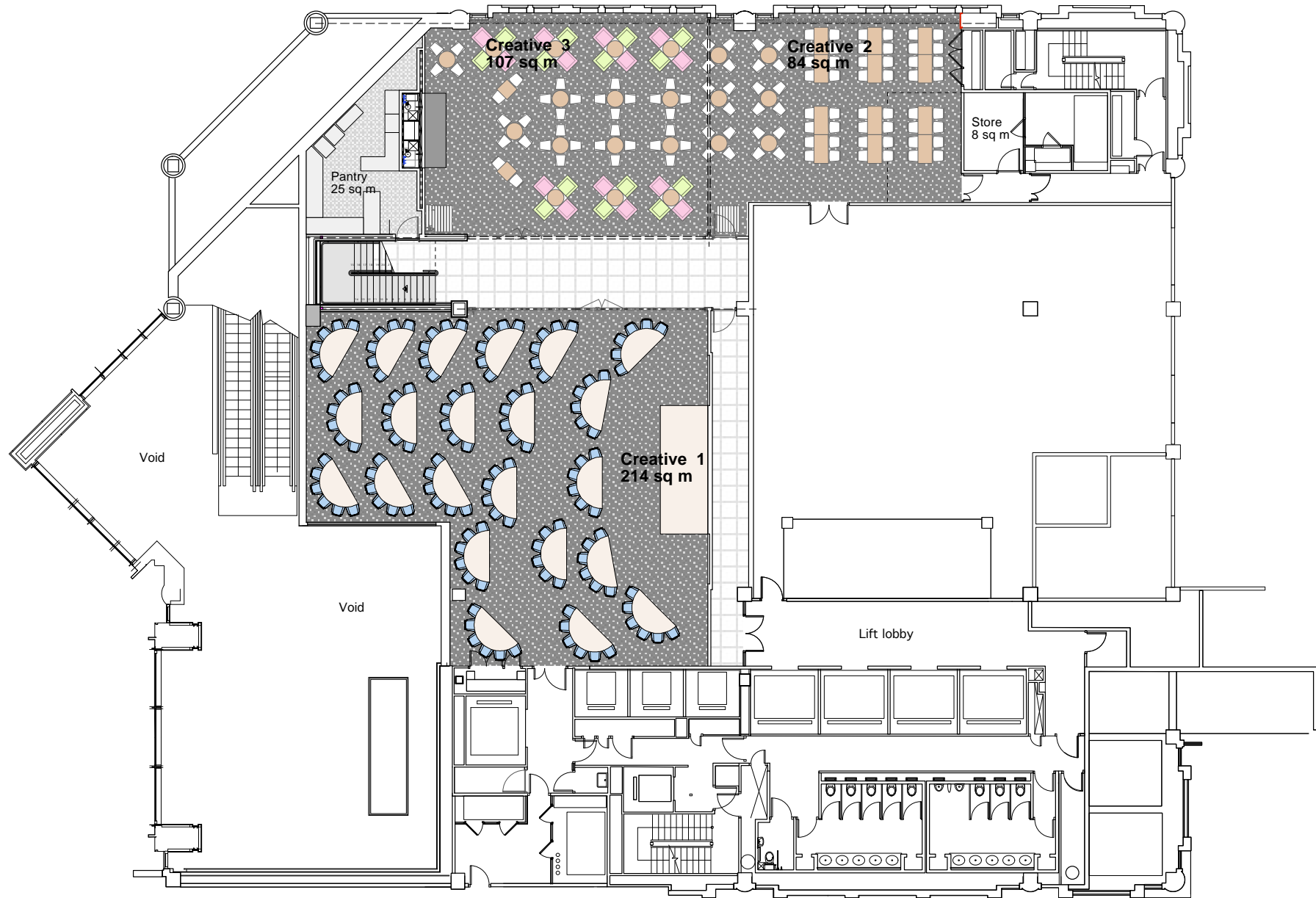
# St Paul's - 200 Aldersgate

## First floor



# St Paul's - 200 Aldersgate

## Upper ground floor



# Capacities

## First floor - North wing

Rooms	Dimensions (m)	Theatre	Cabaret	U-shape	Classroom	Boardroom
Premium 1	W7.7 x L12 x H3.6	108	72	34	68	38
Premium 2	W8.5 x L16 x H3.6	176	84	42	84	48
Premium 3	W7.7m x L12 x H3.6	108	72	34	68	38
Premium Suite	W24 x L12 x H3.6	400	250	48	190	72
Premium 1 & 2	TBA	300	150	N/A	150	N/A
Premium 2 & 3	TBA	300	150	N/A	150	N/A
Dedicated	W4.5 x L6 x H3.6	24	13	10	N/A	12
Specialist	W8 x L6.3 x H3.6	42	24	20	16	24
Vibrant	W6 x L4.5 x H3.6	24	10	12	12	12
Versatile	W6 x L8 x H3.6	54	24	20	24	24

## First floor - South wing

Rooms	Dimensions (m)	Theatre	Cabaret	U-shape	Classroom	Boardroom
Impressive 1	W7.5 x L12.5 x H3.6	85	42	18	36	24
Impressive 2	W7.5 x L12.5 x H3.6	96	45	26	42	38
Impressive Suite	W14.5 x L12 x H3.6	186	96	36	96	52
Innovative	W9.5 x L8 x H3.6	86	42	22	38	28
Energetic	W6 x L10 x H3.6	44	24	16	16	24
Dynamic	W5 x L7.5 x H3.6	40	14	14	16	16
Touch Base	W6.2 x L4 x H3.6	N/A	12	10	N/A	12

## Upper ground

Rooms	Dimensions (m)	Theatre	Cabaret	U-shape	Classroom	Boardroom
Creative 1	W16.8 x L14.9 x H2.7	250	150	40	150	50
Creative 2	W10.6 x L9.3 x H2.7	75	28	20	28	24
Creative 3	W11.8 x L9.3 x H2.7	100	70	28	70	32
Creative 2 & 3	W22.4 x L18.6 x H2.7	175	98	45	98	55

Creative 1 & 2 & 3 Open plan space for evening events / exhibitions

# 200 Aldersgate

St Paul's

London

EC1A 4HD

Tel: 020 3011 0830

Fax: 020 7989 0831

Email: [stpauls@etcvenues.co.uk](mailto:stpauls@etcvenues.co.uk)

Web: [etcvenues.co.uk/venues/stpauls](http://etcvenues.co.uk/venues/stpauls)