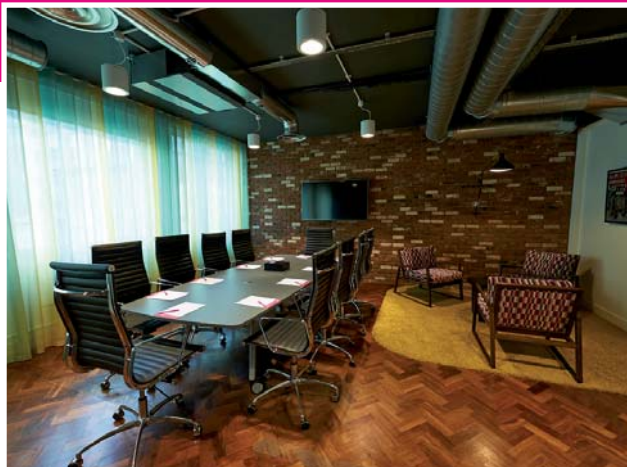



## How to find etc.venues Marble Arch




**etc.venues Marble Arch is located on Edgware Road in the heart of the West End.**


### By Underground, Central line to Marble Arch Station

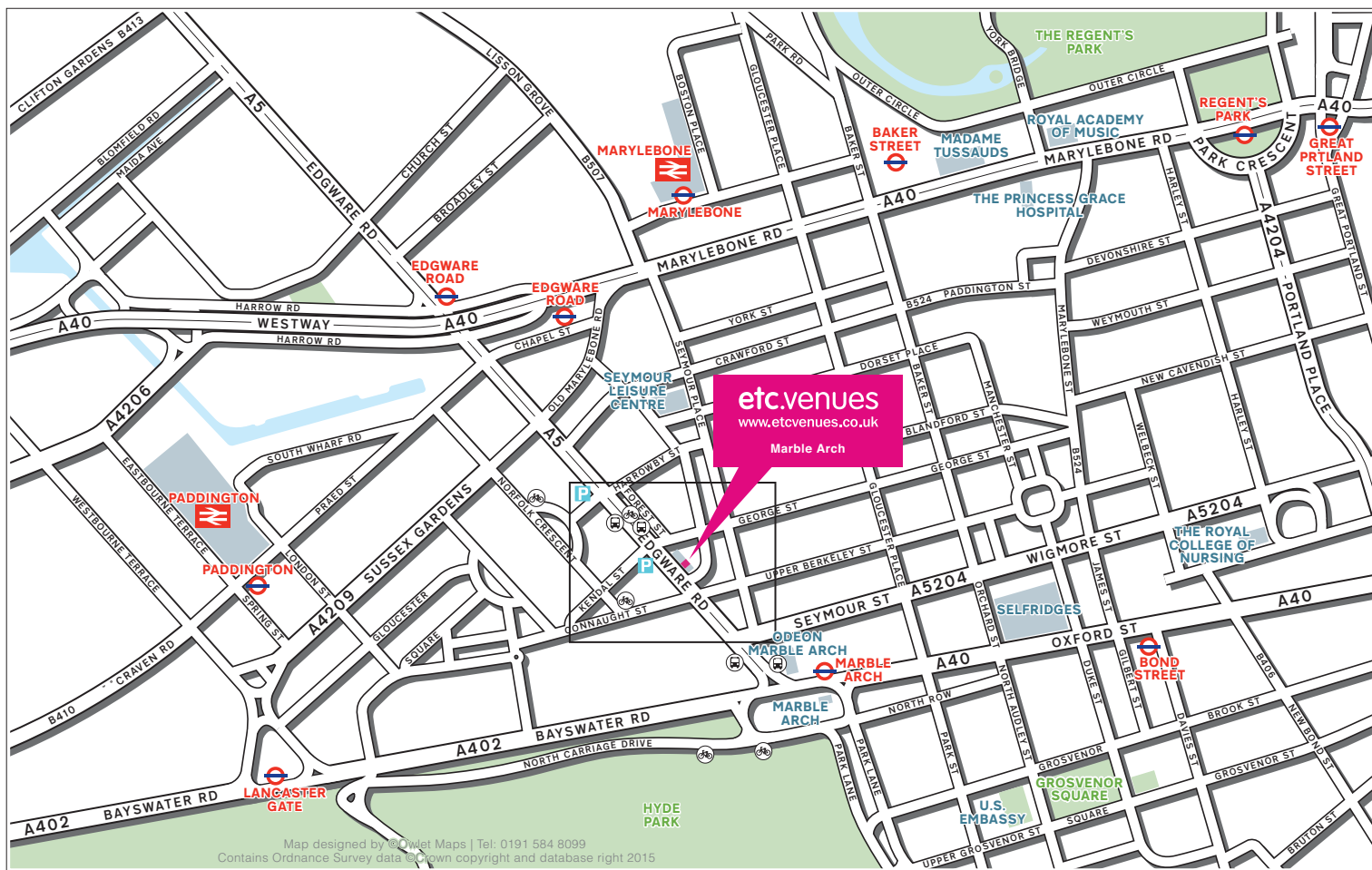
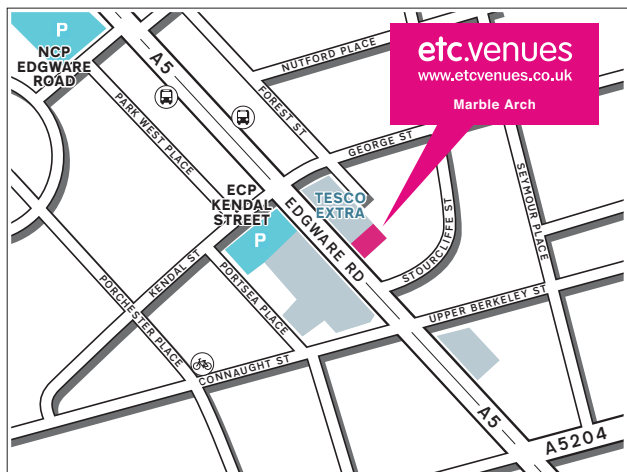
When you exit the station, turn right on to Oxford Street and then second right on to Edgware Road walking past the Odeon Cinema. etc.venues Marble Arch is in Garfield House, on the right hand side next to the Tescos.

 **By Bus**  
etc.venues Marble Arch sits on many bus routes including 7, 10, 73, 98, 137, 390, 6, 23, 94, 159, 30, 94, 113, 159, 274, 2, 16, 36, 74, 82, 148, 414, 436.

 **Parking**  
There is a NCP car park situated within close proximity to Marble Arch - visit [www.ncp.co.uk](http://www.ncp.co.uk) for more details.

 **By London Cycle Scheme**  
The nearest "Boris Bike" docking station is on Edgware Road / Marble Arch.

 **By Train**  
Paddington Station is approximately 20 minutes walk. Use the Praed Street exit and turn left on to Praed Street and continue until you walk on to Edgware Road. Turn right onto Edgware Road and continue towards Marble Arch. etc.venues Marble Arch is at the other end of Edgware Road on the left. Alternatively bus routes 36 or 436 go from outside Paddington Station on Praed Street and on to Edgware Road and takes approximately 10 minutes to Marble Arch.



**Garfield House, 86-88 Edgware Road, London W2 2EA**

**etc.venues**  
[www.etcvenues.co.uk](http://www.etcvenues.co.uk)

Sales Office: 020 7793 4200 Fax: 020 7793 4201  
Email: [marblearch@etcvenues.co.uk](mailto:marblearch@etcvenues.co.uk)  
Sat nav: 51.51542, -0.163319