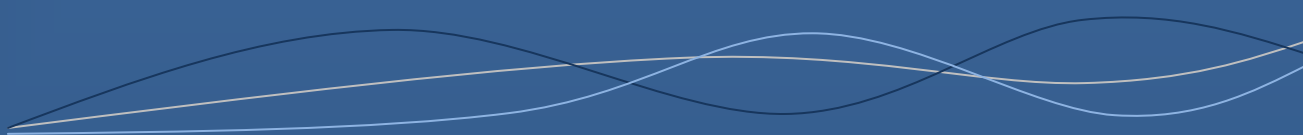


Marlin Apartments

Londinium Tower – Tower Hill

Guide 2009



Londinium Tower – Tower Hill

87 Mansell Street

Tower Hill

London, E1 8AP



<http://www.marlinapartments.com/londinium-tower-bridge.html>

Location

Londinium Tower is located in one of the oldest areas of the City, just a few minutes walk from Tower Bridge, The Tower of London and St Katherine's Docks. The development is easily accessible via the local Tower Hill and Tower Gateway stations, collectively servicing the **District** and **Circle** Underground Lines and **Docklands Light Railway (DLR)** network.

Directions by Tube

Tower Hill Station: Take the **District** or **Circle** Underground lines to Tower Hill station. Proceed to the main exit and turn left. Proceed until you reach the pedestrian crossing. Turn left here onto the Minories, followed by the first right turn onto Goodmans Yard. The Londinium Tower development is located on the corner of the left turn. It can be identified by the Goodmans Field public house below.

Tower Gateway Station: Take the **Docklands Light Railway (DLR)** service to Tower Gateway station. Upon exiting the station, turn immediately right onto the Minories. Take by the first right turn onto Goodmans Yard. The Londinium Tower development is located on the corner of the left turn. It can be identified by the Goodmans Field public house below.



LONDINIUM TOWER – APARTMENT DETAILS

Directions by Car

Once on the Minories, follow the road round to the right and take the left lane at the traffic lights. The building is directly to the right above Goodmans Field public house. The car park entrance to Londinium Tower is located on South Tenter Street. Please follow the one-way system, right turn from Mansell Street onto Alie Street followed by the first right onto St Marks Street. South Tenter is the third right and takes you to the Car Park at the rear of the development.

This is a lift service Car Park

Check-in procedure

Self check-in is in operation at this development. Your booking confirmation will contain building access codes as well as codes to a lockbox containing your apartment keys.

CHECK IN TIME IS 15.00 PM

Check-out procedure

Upon checking-out of your apartment, please leave your keys in Lockbox number "100".

CHECK OUT TIME IS 10.30 AM.



LONDINIUM TOWER – LOCAL INFORMATION & HIGHLIGHTS

Apartment Contents

Wide-screen television

DVD Player

Complimentary Broadband Internet

Personal Entry System

Digital TV

Modern and luxurious furniture

Fully-fitted contemporary kitchen

Full range of utensils

Integrated Washer/Dryer

Multi-function dishwasher

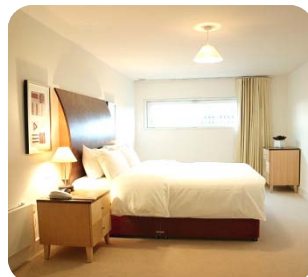
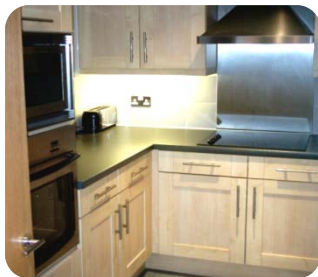
Stainless steel oven/hob

High-specification bathroom

High-Powered shower

Luxury toiletries

Apartment Images



LONDINIUM TOWER – LOCAL INFORMATION & HIGHLIGHTS

Local Information

Londinium Tower is a wonderful building with its own personality and character. These serviced apartments reflect a contemporary and modern style with the same sophistication and attention to detail that is found throughout our range. The balance between London's cosmopolitan culture and famous history can be found on the doorstep of Londinium Tower, in this vibrant district of London.

Local Highlights

Tower Bridge:

One of London's most famous landmarks.

Located within a short walk - approx. 5 minutes.



The Tower of London:

A Royal Palace & Fortress as well as an iconic and historic monument.

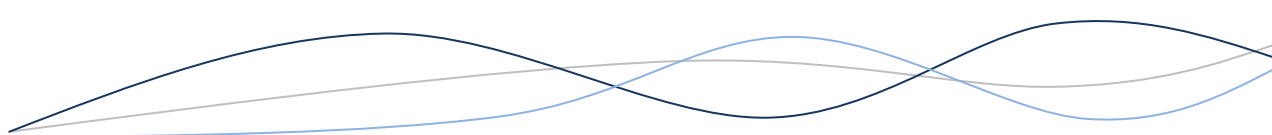
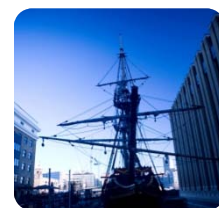
Located within a 5 minute walk.



St Katherine's Dock:

The most unique waterside location in central London.

Located within a 10 minute walk.



LONDINIUM TOWER – ADDITIONAL ITEMS & CONTACT INFORMATION

Additional Items

During your stay you may wish to order some of the following items. These items are subject to availability and can be ordered by calling our Reservations Team. These items are chargeable.

- Fold Away-Bed
- High Chair
- Daily Clean
- Cot

To make a booking

Please contact our Reservations Team or alternatively book online at:

www.marlinapartments.com

ETC venues guests are also entitled to preferential rates. These can be obtained by entering the promotional code “**marlinetc**”.

Reservations Team

T: +44 (0)207 378 4840

E: enquiries@marlinapartments.com

