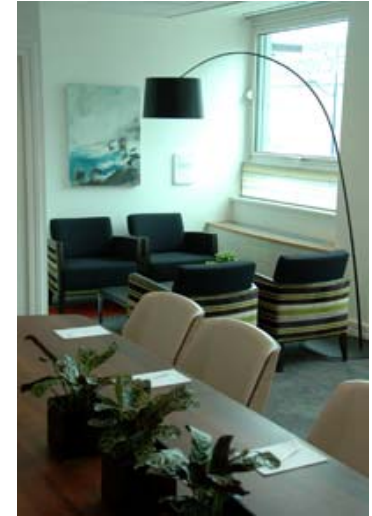


Maple House 'Expands' into new space



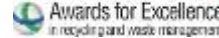
Please contact :

Manni Sehmbi
etc.venues
Maple House
150 Corporation Street
Birmingham
B4 6TB

0121 212 8200

msehmbi@etcvenues.co.uk

www.etcvenues.co.uk



etc.venues

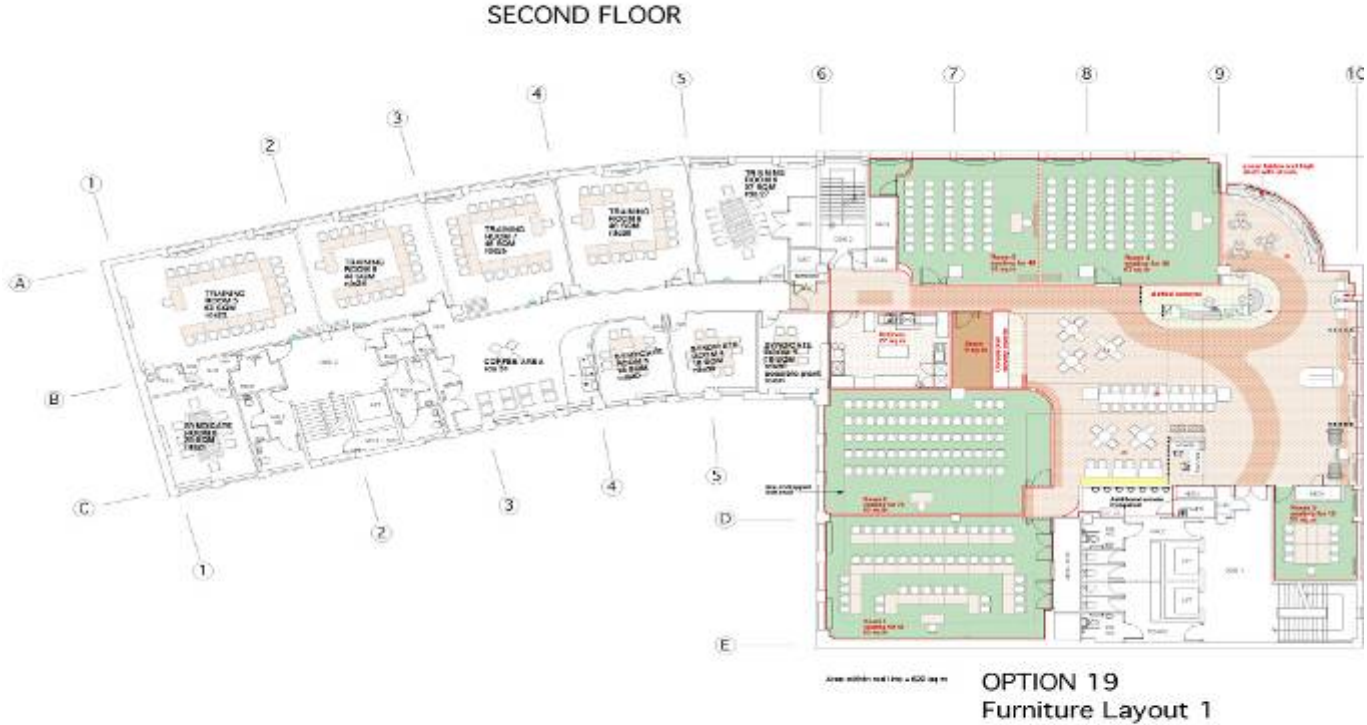
Capacities and specifications

- Dedicated space for exclusive use
- 6420 sq foot of new space
- 5 new rooms
- Exclusive restaurant and coffee lounge overlooking Old Square
- New space allows for Exhibition stands
- Event space and bar area
- Flexible layouts in open plan design – max individual set ups are
 - Cabaret style 80 pax
 - Classroom 56 pax
 - Theatre style 120 pax

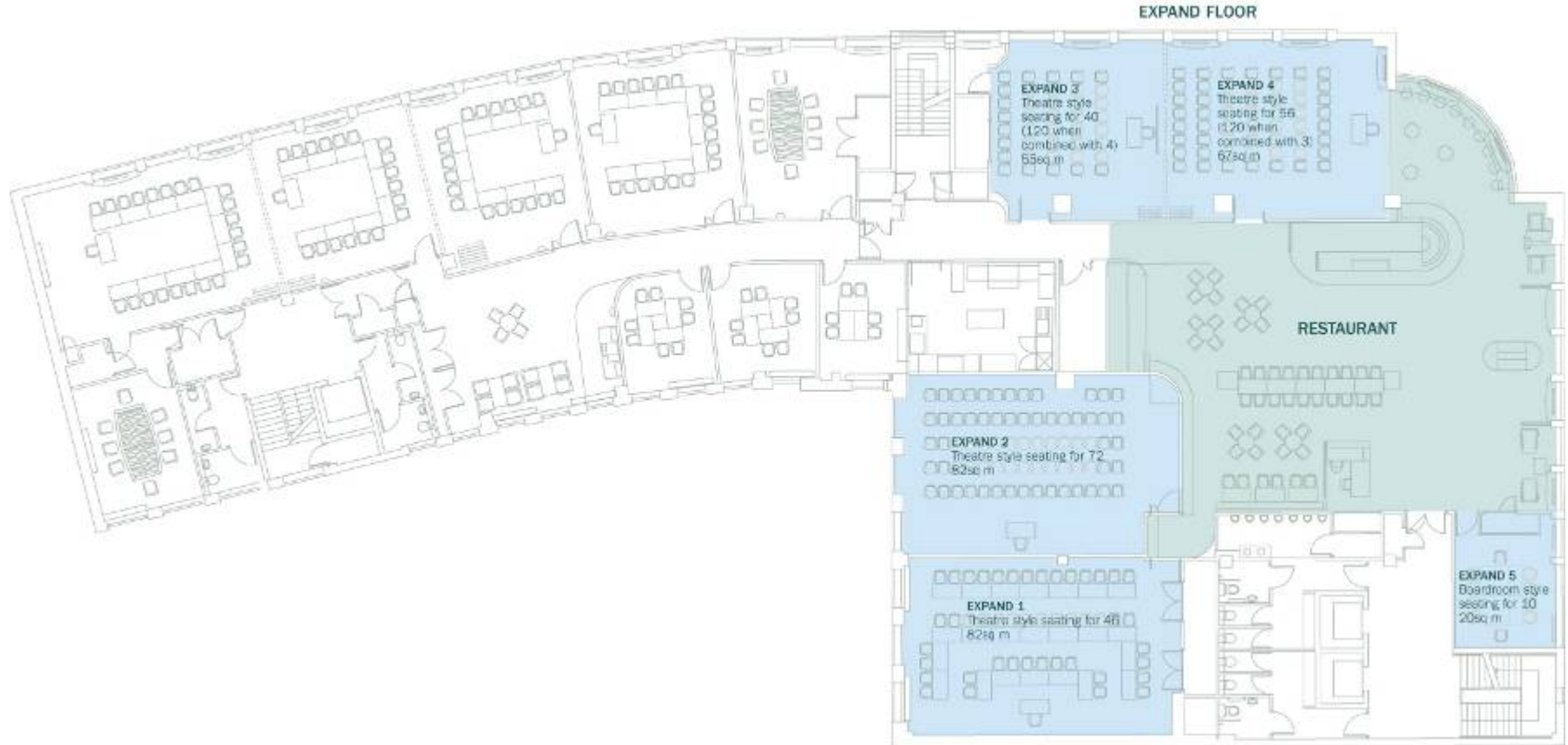
Capacities and specifications

- Option to split main suites into 2 for greater flexibility
- Audiovisual
 - Up to 3m wide screens
 - Flexible stage positions
 - Speech reinforcement
 - Wi fi
- Food and beverage service by our own chefs and service team
- Additional breakout space on other floors at Maple House
- Natural daylight in all rooms and event areas

Architects plans for high quality dedicated meeting, training and conference floor.



'Expand' is in addition to Maple's existing space.



Finishing touches that are a little bit different....



Come and see 'Expand'

Come and see 'Expand' for yourself – call Manni and the team to organise a Hard Hat tour.

Manni Sehmbi 0121 212 8200 or email msehmbi@etcvenues.co.uk

